

# HSF

## TECHNICAL SPECS:

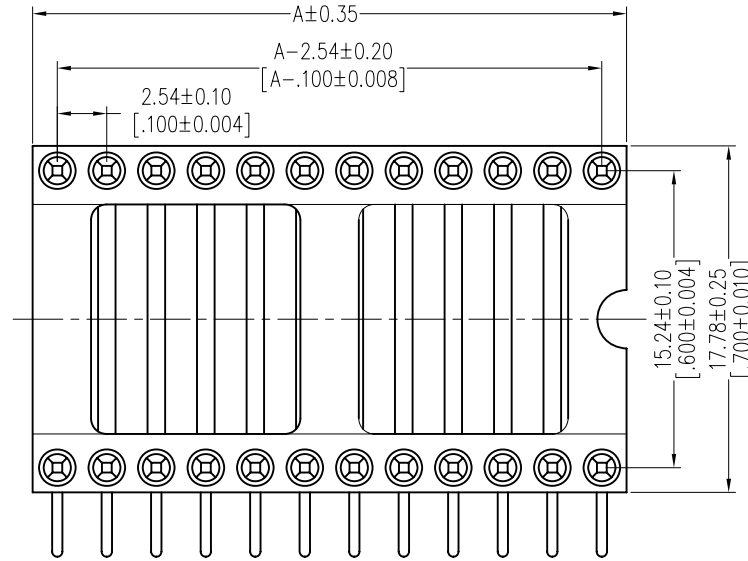
Current Rating: 1.0AMP  
 Contact Resistance: 10mΩ Max  
 Dielectric Strength: Min 1000V<sub>RMS</sub>  
 Mechanical Life: Min 100 cycles  
 Mating Pin: Ø0.40 to Ø0.56mm  
 Forces: (polished steel gauge Ø0.43mm)  
 Insertion: 200g Max/Pin, Withdrawal: 60g Min/Pin  
 Operation Temperature: -40°C to +105°C

Sleeve: Brass CuZn36Pb3(C36000), Sn over Ni  
 Contact Clip(4 finger): BeCu(C17200), Au or Sn over Ni  
 Insulator Material: PPS+30%G.F(UL94V-0)  
 24P~32P Insulators with center one bar  
 36P~48P Insulators with center two bar

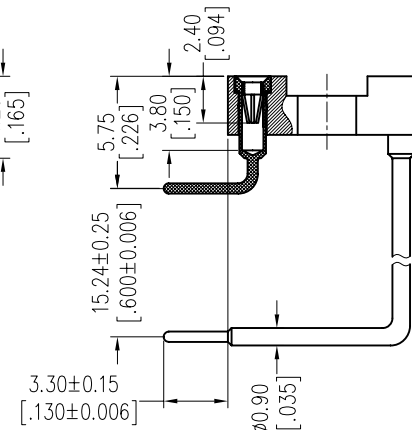
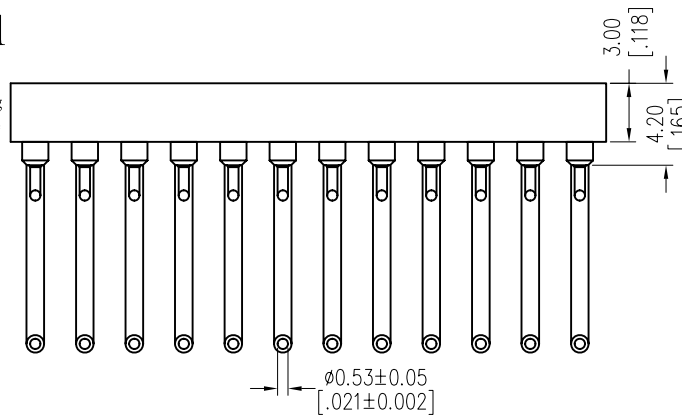
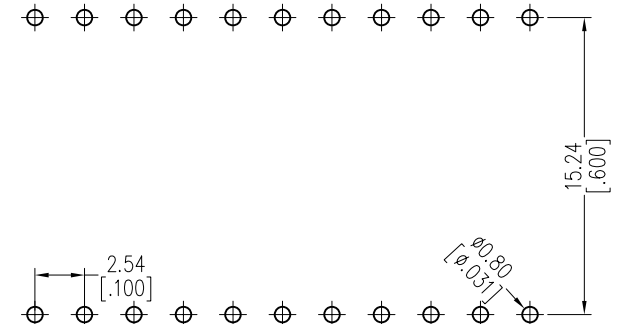
## Ordering Information

7110-302 XX R XX 097 X 1

Row of Pitch 2=15.24mm	No. of Pin See tab	Contact Plating S0=Gold Flash/Tin S3=10u"Gold/Tin S4=15u"Gold/Tin S5=30u"Gold/Tin SN=Tin	Pin Long 097=9.7mm	Packing T=Tube A=Tray
---------------------------	-----------------------	---	-----------------------	-----------------------------



Recommended P.C.B Layout(Top Side)  
 (PCB BOARD TOLERANCE±0.05)



## Dimensional & Ordering Information

NO. of Poles	Part No.	Dim
		A
24	7110-30224RXX097X1	30.48
28	7110-30228RXX097X1	35.56
32	7110-30232RXX097X1	40.64
36	7110-30236RXX097X1	45.72
40	7110-30240RXX097X1	50.80
42	7110-30242RXX097X1	53.34
48	7110-30248RXX097X1	60.96

OPERATION	DRAW	DATE	SCALE	FIT	PART NO. 7110-302XXRXX097X1
x.x ±0.40	JYHuang	2012/11/02	UNIT	mm	
x.xx ±0.25	CHECK	DATE	SIZE	A4	TITLE: 2.54mm IC SOCKET 90° H=3.0 Row of Pitch 15.24mm
x.xxx ±0.15	APPROVE	DATE	SHEET	1/1	Customer NO.
Angle ± 3°			PROJ.		
DIM TOL					

REV	DATE	MODIFICATION DESCRIPTION	CHANGE
A0	2012/11/02	NEW	-----