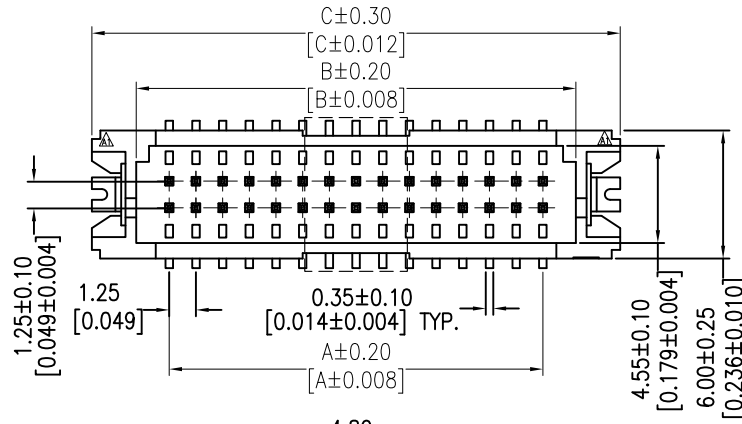


HSF

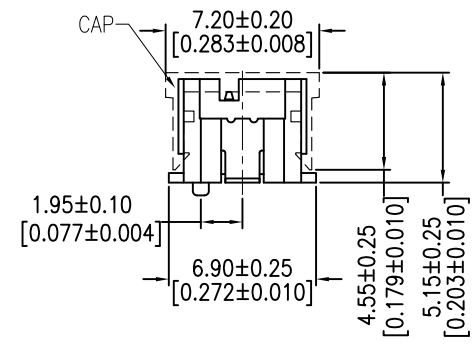
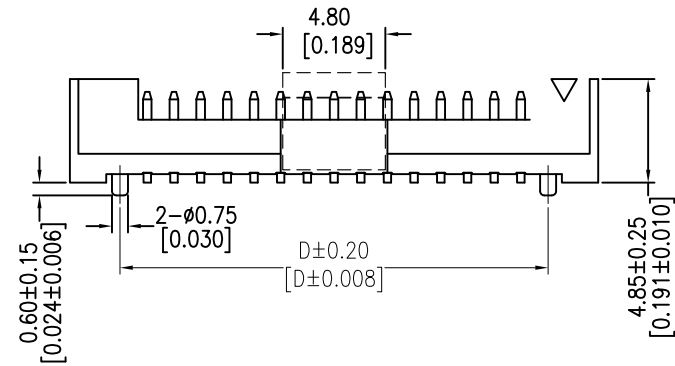
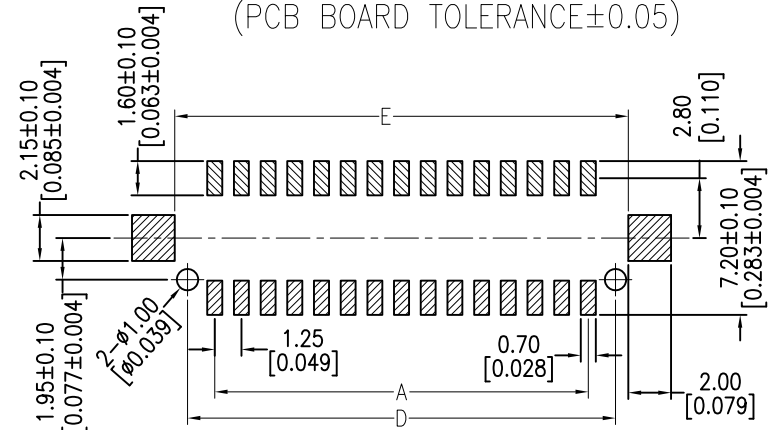
NOTES:

Rating Voltage:250V AC/DC
 Current Rating:1.0AMP
 Contact Resistance:10mΩ max
 Withstand Voltage:250V AC/DC
 Insulation Resistance:100MΩ min
 Operation Temperature:-25°C to +85°C

Contact Material:Brass
 Contact plating:Au Or Sn Over Ni
 Insulator Material:PA9T+30%G.F UL94V-0



Recommended P.C.B Layout(Top Side)
 (PCB BOARD TOLERANCE±0.05)



Ordering Information

WF1253 - WM XX X X 1

- No. of pins: 10=10pin, 20=20pin, 30=30pin, 40=40pin, 50=50pin
- Contact Plating: S0=Gold Flash/Tin, S3=10u"Gold/Tin, S4=15u"Gold/Tin, S5=30u"Gold/Tin, G0=Gold Flash, G3=10u"Gold, G4=15u"Gold, G5=30u"Gold, Blank=Tin
- Color: B=Black, E=Beige, T=Natural, W=White
- Packing: T=Tube, P=Tube+CAP, R=Tape&Reel+CAP

Specification & Ordering Information:

Circuit	Part No.	Dimension				
		A	B	C	D	E
10	WF1253-WM10XT1	5.00	8.10	12.25	7.55	8.75
20	WF1253-WM20XT1	11.25	14.35	18.50	13.80	15.00
30	WF1253-WM30XT1	17.50	20.60	24.75	20.05	21.25
40	WF1253-WM40XT1	23.75	26.85	31.00	26.30	27.50

REV	DATE	MODIFICATION DESCRIPTION	CHANGE	OPERATION	DRAW	DATE	SCALE	FIT	PART NO.
A1	2016/10/14	以实物修改图面	△A1	X.X ±0.40	DingWenMin	2016/10/14	UNIT	mm	SEE TAB
AO	2012/09/05	NEW	—	X.XX ±0.25	CHECK	DATE	SIZE	A4	TITLE:
				X.XXX ±0.15	APPROVE	DATE	SHEET	1/1	1.25 WAFER SMT
				Angle ± 3'			PROJ.	Customer NO.	
				DIM TOL					