



TAI-SAW TECHNOLOGY CO., LTD.

No. 3, Industrial 2nd Rd., Ping-Chen Industrial District,
Taoyuan, 324, Taiwan, R.O.C.

TEL: 886-3-4690038 FAX: 886-3-4697532

E-mail: tstsales@mail.taisaw.com Web: www.taisaw.com

Product Specifications Approval Sheet

Product Description: SAW Filter 1583 MHz (BW 46.79MHz) SMD 3.0X3.0 mm

TST Part No.: TA1785A (This part is is compliant with AEC-Q200)

Customer Part No.: _____

Customer signature required
Company: _____
Division: _____
Approved by : _____
Date: _____

Checked by: _____ Michael Yang *Michael*

Approved by: _____ Andy Yu *Andy Yu*

Date: _____ 2020/04/08

1. Customer signed back is required before TST can proceed with sample build and receive orders.
2. Orders received without customer signed back will be regarded as agreement on the specifications.
3. Any specifications changes must be approved upon by both parties and a new revision of specifications shall be released to reflect the changes.



TAI-SAW TECHNOLOGY CO., LTD.

No. 3, Industrial 2nd Rd., Ping-Chen Industrial District,
Taoyuan, 324, Taiwan, R.O.C.

TEL: 886-3-4690038 FAX: 886-3-4697532

E-mail: tstsales@mail.taisaw.com Web: www.taisaw.com

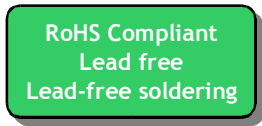
SAW Filter 1583MHz

MODEL NO.:TA1785A

REV. NO.:6.0

A. MAXIMUM RATING:

1. Input Power Level: 15 dBm
2. DC Voltage : 0V
3. Operating Temperature: -40°C to +105°C
4. Storage Temperature: -40°C to +105°C
5. Moisture Sensitivity Level: Level 1 (MSL1)



Electrostatic Sensitive Device (ESD)

Moisture Sensitivity Level: 1

B. ELECTRICAL CHARACTERISTICS:

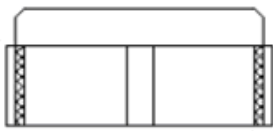
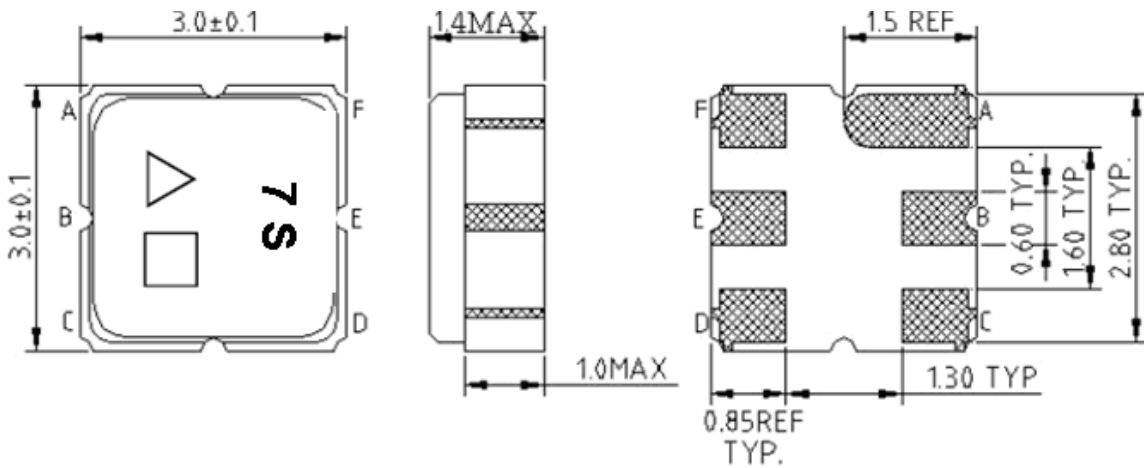
Terminating source impedance (single) : $Z_s = 50 \Omega$

Terminating load impedance(single) : $Z_L = 50 \Omega$

Item		MIN	Type.	MAX	Note
Center Frequency	Fc	MHz	-	1583	
Insertion Loss (1559.1~1563.1 MHz)	IL	dB		1.9	2.1
Insertion Loss (1573.42~1577.42 MHz)	IL	dB		1.5	2.0
Insertion Loss (1597.55~1605.89 MHz)	IL	dB		1.8	2.5
VSWR (1559.1~1563.1 MHz)				1.5	2.0
VSWR (1573.42~1577.42 MHz)				1.7	2.5
VSWR (1597.55~1605.89 MHz)				1.7	2.2
Amplitude ripple					
(1559.1~1563.1 MHz)		dB		0.6	1.0
(1573.42~1577.42 MHz)		dB		0.3	0.9
(1597.55~1605.89 MHz)		dB		0.5	1.2
Attenuation					
100 ~ 824 MHz		dB	40	46	
824 ~ 925 MHz		dB	40	46	
925 ~ 960 MHz		dB	40	46	
1427 ~ 1463 MHz		dB	36	39	
1525 ~ 1530 MHz		dB	9	20	
1638 ~ 1642 MHz		dB	20	45	
1710 ~ 1785 MHz		dB	36	40	
1850 ~ 1980 MHz		dB	36	40	
2400 ~ 2570 MHz		dB	31	35	
2570 ~ 2690 MHz		dB	28	30	
2690 ~ 3000 MHz		dB	28	30	
Package size	mm	SMD3030			

* The PCB lose for demo-B is -0.2dB

C.OUTLINE DRAWING:



- #B: Input
- #E: Output
- # A.C.D.F Ground
- △:Year code (ex 2008→8)
- : Date code
- Unit: mm

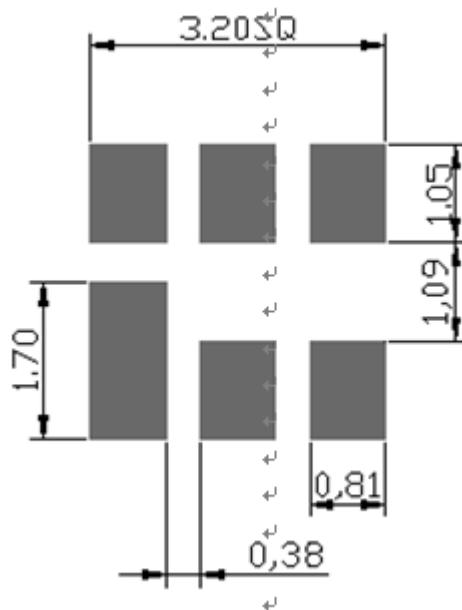
Data code : See the table

WK	01	02	...	26	27	28	...	52
Code	A	B	...	Z	a	b	...	z

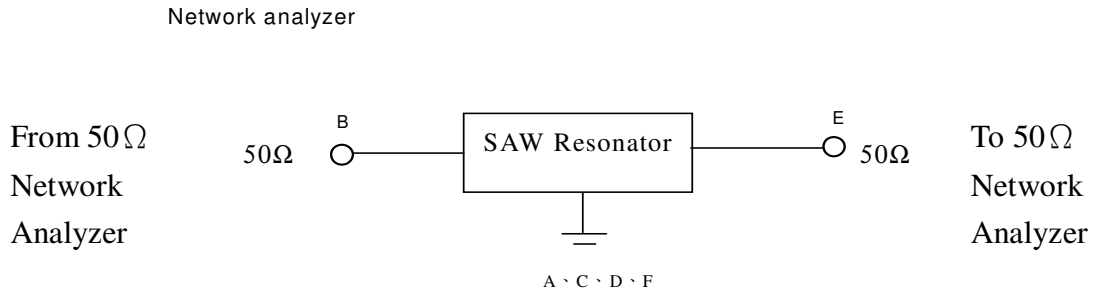
△ Year code : See the table

Year	2008	2009	2010	2011	...	2019	2020
Code	8	9	0	1	...	9	0

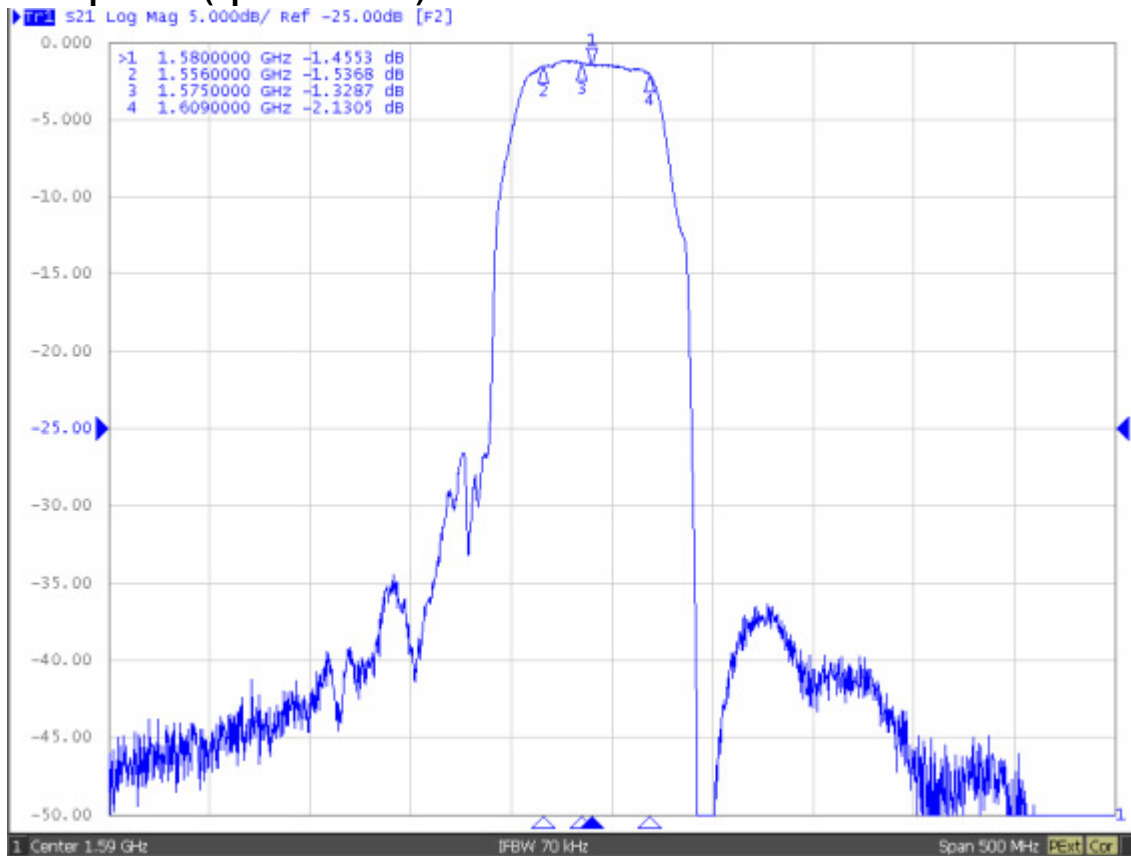
D.FOOT PRINT:



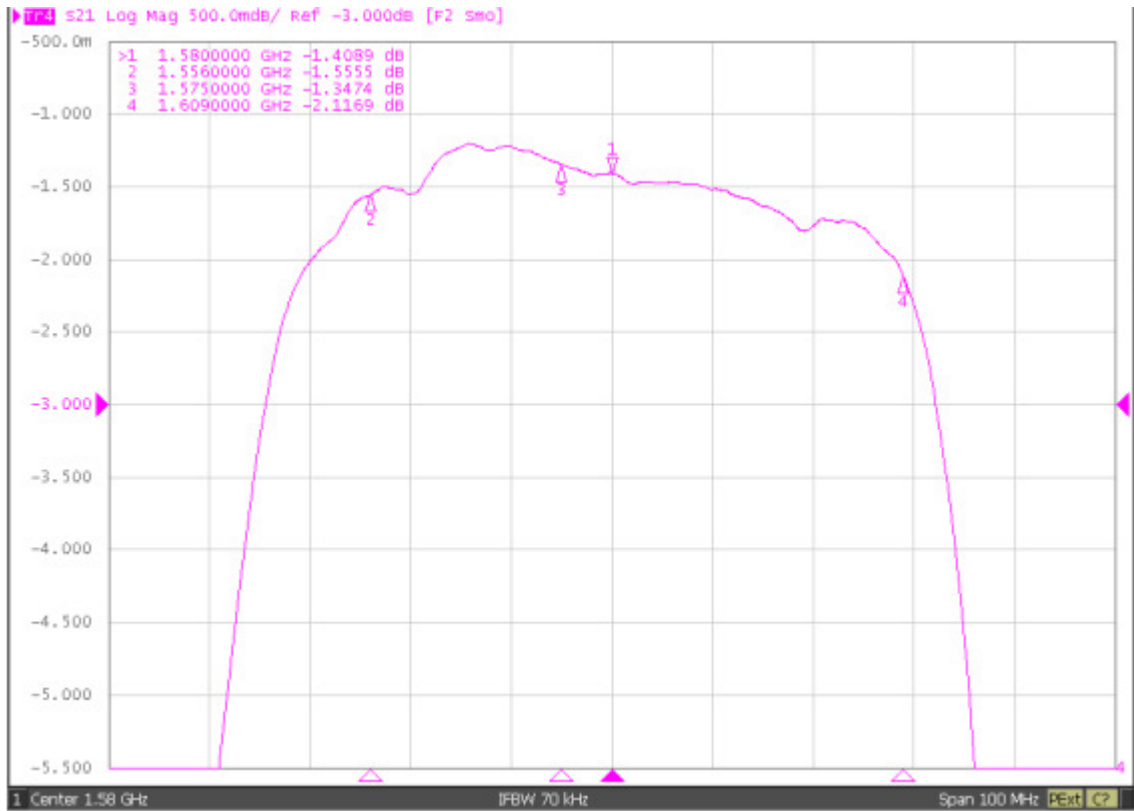
E. TEST CIRCUIT:



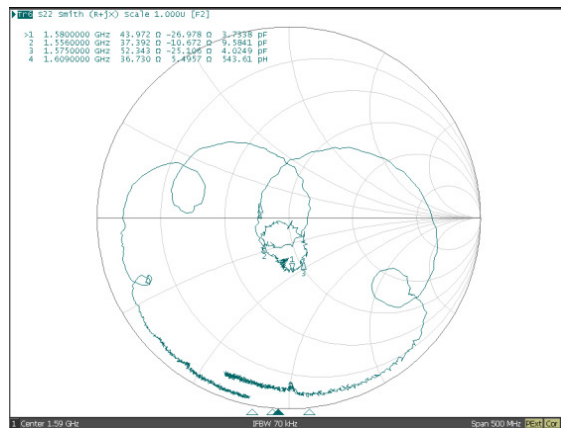
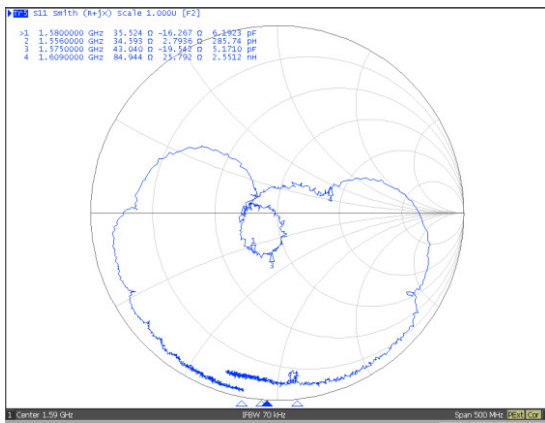
F. Frequency Characteristics: S21 response: (span 500MHz)



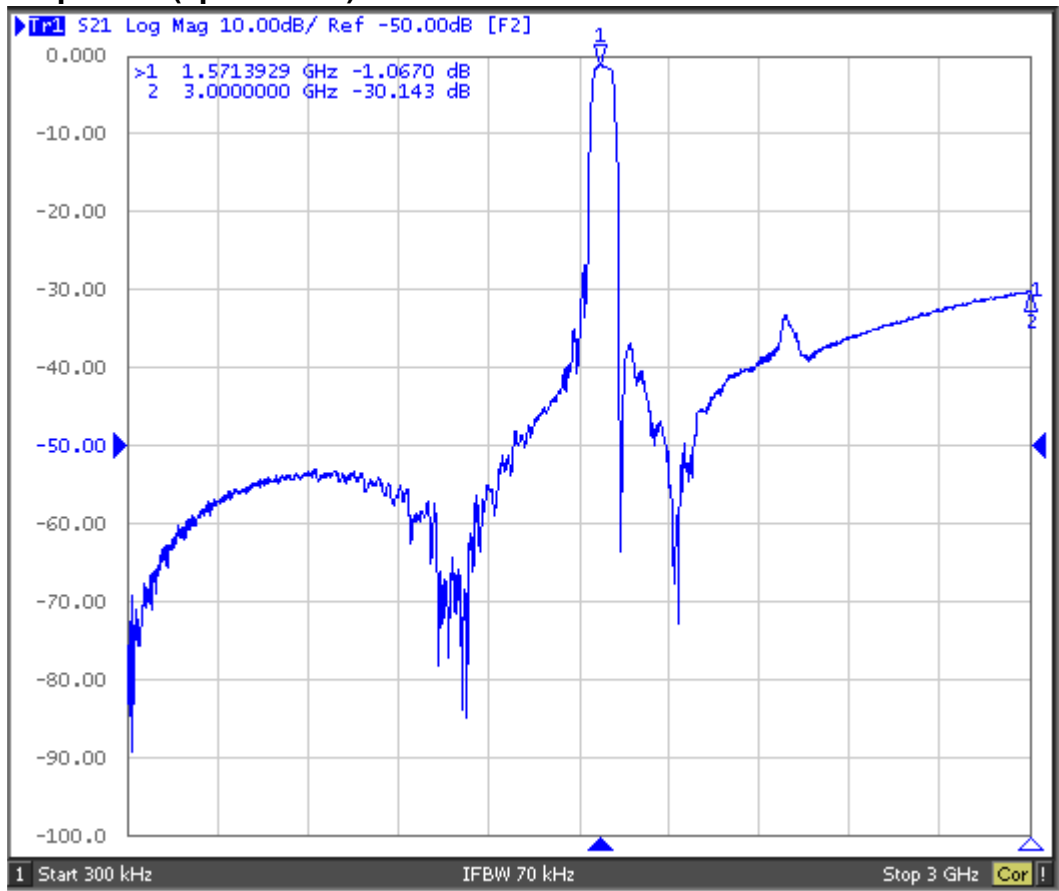
S21 response: (span 100MHz)



S11/S22 response :



S21 response: (span 3GHz)



G. PACKING:

1. REEL DIMENSION

(Please refer to FR-75D10 for packing quantity)

