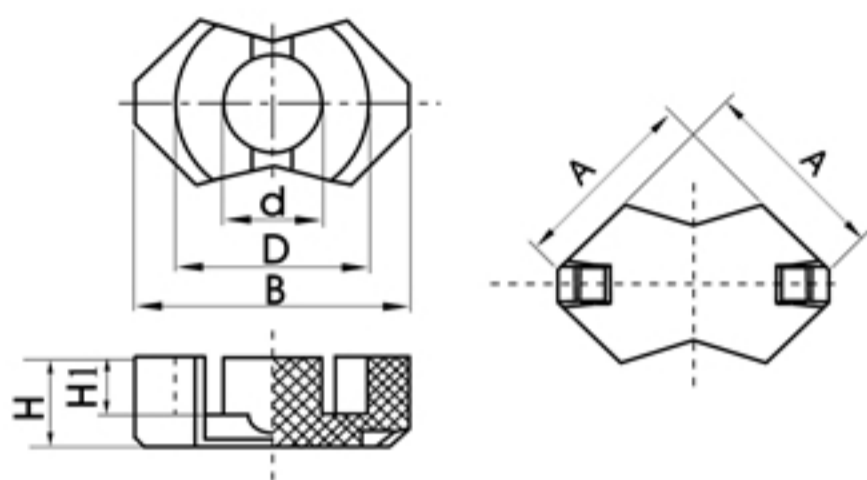


Soft ferrite cores 软磁铁氧体

RM 型磁芯



软磁铁氧体

适用材料R2KB1

型号	磁心参数				W (g)	A_L (nH/N ²) (±25%)
	C1 (mm ⁻¹)	Le (mm)	Ae (mm ²)	Ve (mm ³)		
RM4	1.69	23.3	13.8	322	1.7	950
RM5	0.935	23.2	24.8	574	3.3	1700
RM6	0.784	29.2	37.0	1090	4.9	2400
RM8	0.604	38.4	63.0	2440	12.0	3300
RM10	0.462	44.6	96.6	4310	22.0	4050
RM12	0.388	56.6	146.0	8340	45.0	5050
RM14	0.353	70.0	198.0	13900	74.0	5700

型号	尺寸						
	A (mm)	B (mm)	C (mm)	D (mm)	d (mm)	H (mm)	H1 (mm)
RM4	9.8-0.4	11.0-0.4	4.6-0.2	8.0+0.3	3.9-0.2	5.25-0.1	3.5+0.2
RM5	12.3-0.5	14.6-0.6	6.8-0.4	10.2+0.4	4.9-0.2	5.25-0.1	3.15+0.2
RM6	14.7-0.6	17.9-0.6	8.2-0.4	12.4+0.5	6.4-0.2	6.25-0.1	4.0+0.2
RM8	19.7-0.8	23.2-0.9	11.0-0.4	17.0+0.6	8.55-0.3	8.25-0.1	5.4+0.2
RM10	24.7-1.1	28.5-1.3	13.5-0.5	21.2+0.9	10.9-0.4	9.35-0.1	6.2+0.3
RM12	29.8-1.2	37.6-1.5	16.1-0.5	24.9+1.1	12.8-0.4	13.3-0.1	8.4+0.3
RM14	34.8-1.3	42.2-1.2	19.0-0.6	29.0+1.0	15.0-0.5	15.1-0.1	10.4+0.3